

Case Study: WICED, Liverpool

015/Mar14



Photo: Positive Image Photography

Kawneer glazing systems feature on the headquarters of the Women's Organisation

The UK's first Women's International Centre for Economic Development (WICED) showcases almost the full spectrum of glazing from Kawneer, including AA®100 curtain walling, AA®601TE casement windows and series 350 severe-duty commercial entrance doors.

Building: Women's International Centre for Economic Development (WICED)

Location: Liverpool

Architect: IBI Nightingale

Main Contractor: Kier Construction

Installer: Bennett Architectural Aluminium Solutions

WWW.KAWNEER.CO.UK

 **KAWNEER**
AN ARCONIC COMPANY

Glazing helps women with a WICED view of Liverpool

The UK's first Women's International Centre for Economic Development (WICED) showcases almost the full spectrum of glazing from Kawneer.

AA®100 curtain walling features on striking faceted convex and concave gable screens and is complemented by AA®601TE casement windows and series 350 severe-duty commercial entrance doors.

The headquarters for the Women's Organisation is a 2,000m² state-of-the-art landmark building over five floors designed by architects IBI Nightingale to blend into its surroundings in Liverpool's Baltic Triangle.

The 1,600m² managed work space provides 26 incubator offices for fledgling businesses and an International Research Hub to give direct access to valuable research data, information and international links with other female entrepreneurs globally.

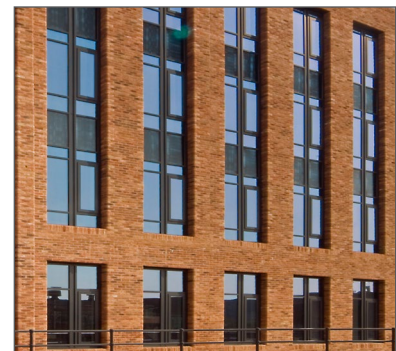
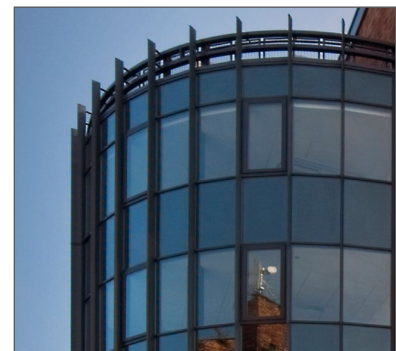
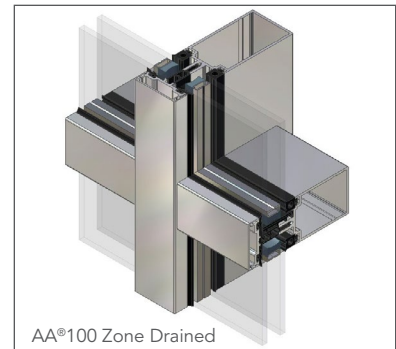
The fourth floor houses flexible space, a conference area with multi-media facilities including digital projection and video conferencing. The building also houses a café which overlooks its own plaza while rooftop terraces provide spectacular views of the River Mersey and Liverpool skyline.

The Kawneer curtain walling with 50mm sightlines includes feature face caps that extend above the curtain walling line to provide balustrading to the upper terrace levels while the windows include automatic-opening top-hung vents on the first floor and manual top-hung vents on the ground, second and third floor levels.

All the Kawneer systems were installed by approved specialist sub-contractor Bennett Architectural Aluminium Solutions for main contractor Kier Construction.

The Women's Organisation (formerly Train 2000) is an innovative social enterprise that provides quality enterprise and employment services and influence policy to improve the economic position of women.

WICED secured investment from Liverpool City Council, which owns the site, and the European Regional Development Fund, and a loan from Futurebuilders totalling £5million.



Please contact our Architectural Services Team if you have a project you would like to discuss: Tel: 01928 502604 / Email: kawneerAST@arconic.com

Kawneer UK Limited, Astmoor Road, Astmoor Industrial Estate, Runcorn, Cheshire WA7 1QQ
Tel: + 44 (0)1928 502500 Fax: + 44 (0)1928 502501

WWW.KAWNEER.CO.UK